



Erratum

Erratum to “Spontaneous growth of the polyhedral fullerene crystals in the supersaturated Ni–C₆₀ composite”

[Journal of Alloys and Compounds 509S (2011) S380–S383]

Jiri Vacik^{a,b,*}, Vasyl Lavrentiev^a, Pavel Horak^a, Alena Michalcova^c, Hiroshi Abe^d^a Nuclear Physics Institute of the Academy of Sciences of the Czech Republic, 250 68 Rez, Czech Republic^b Research Center Rez, 250 68 Rez, Czech Republic^c Institute of Chemical Technology Prague, Technická 5, 166 28 Prague^d Advanced Science Research Center, Japan Atomic Energy Agency, Tokai, Ibaraki 319-1195, Japan

The publisher regrets that all the figures were incorrectly published in the original version of the article. The corrected version of the Figs. 1–4 and their captions are as follows:

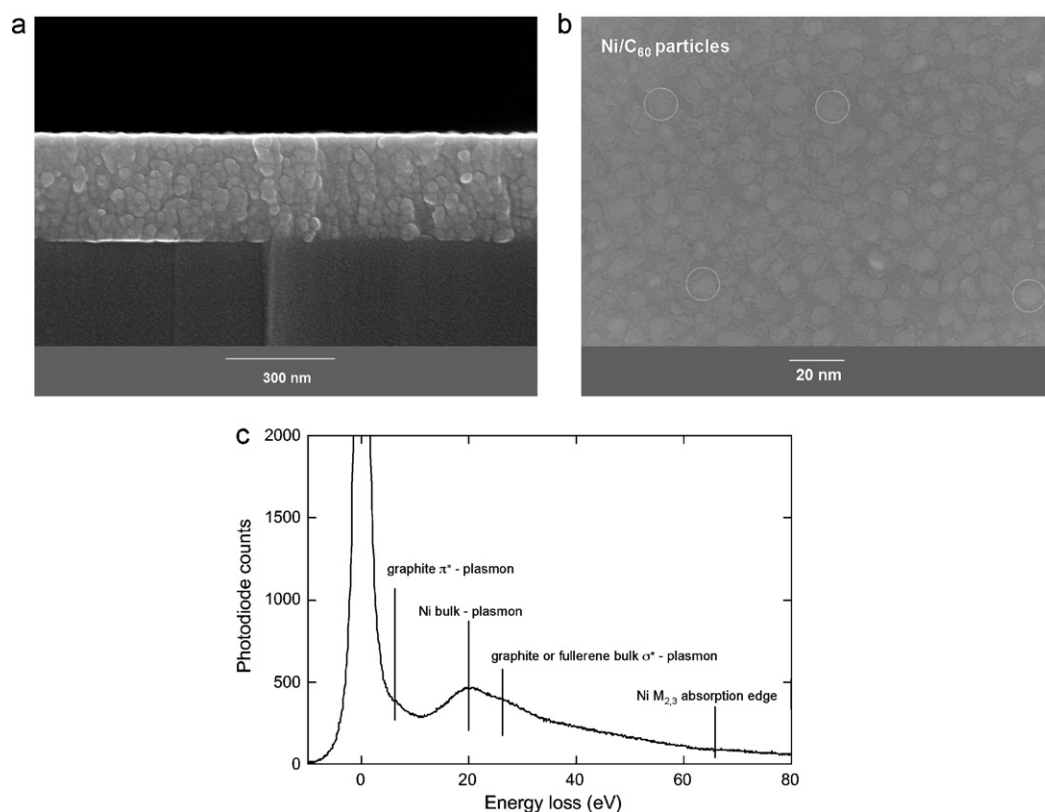


Fig. 1. a. Cross-section SEM micrograph of the as-deposited Ni + C₆₀ morphology. b. The TEM micrograph of the 20 nm thin Ni + C₆₀ film deposited at RT. In the TEM image separated particles with the size of ~10 nm can be seen. The particles consist of Ni core with a thin C₆₀ rind. c. The EELS (0–80 eV) analysis of the thin Ni + C₆₀ hybrid composite.

DOI of original article: [10.1016/j.jallcom.2011.04.107](https://doi.org/10.1016/j.jallcom.2011.04.107).

* Corresponding author.

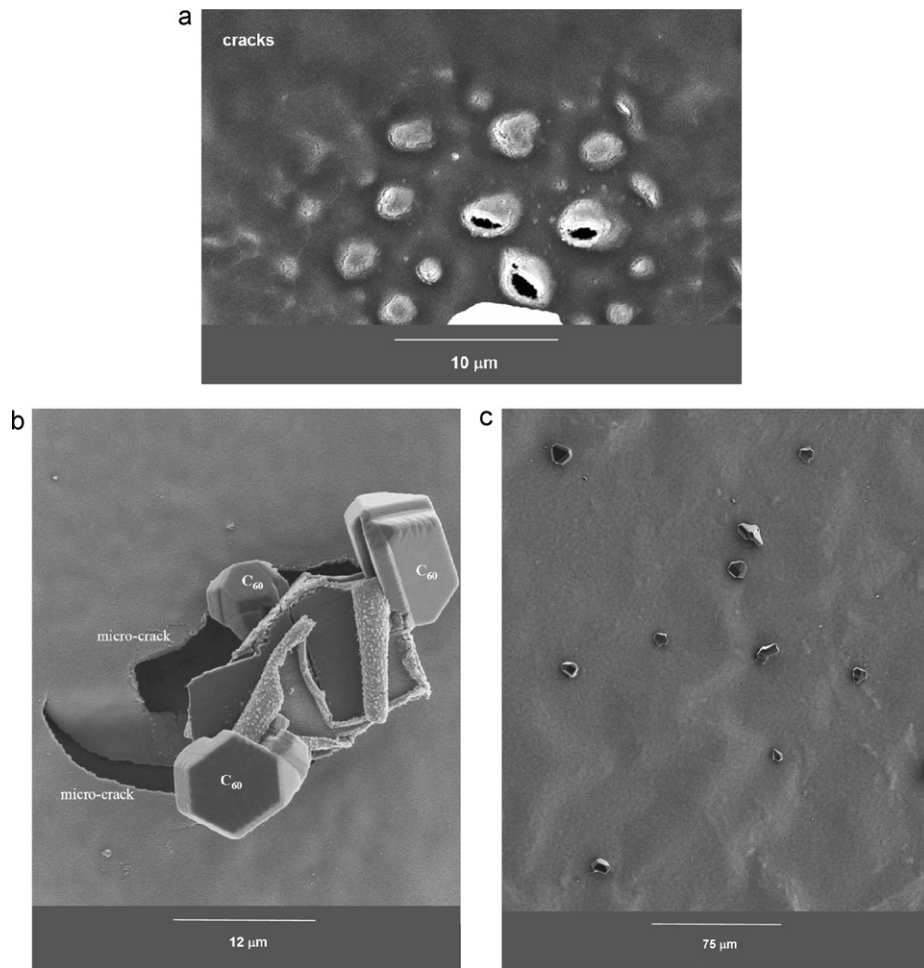


Fig. 2. a. Random array of the micro-cracks formed in the first period of the C₆₀ crystal growth. b. The C₆₀ polyhedral crystals grown inside and around the micro-cracks. c. The C₆₀ polyhedral crystals grown in supersaturated Ni + C₆₀ composite with density of $\sim 200 \text{ mm}^{-2}$ at the spots of micro-cracks.

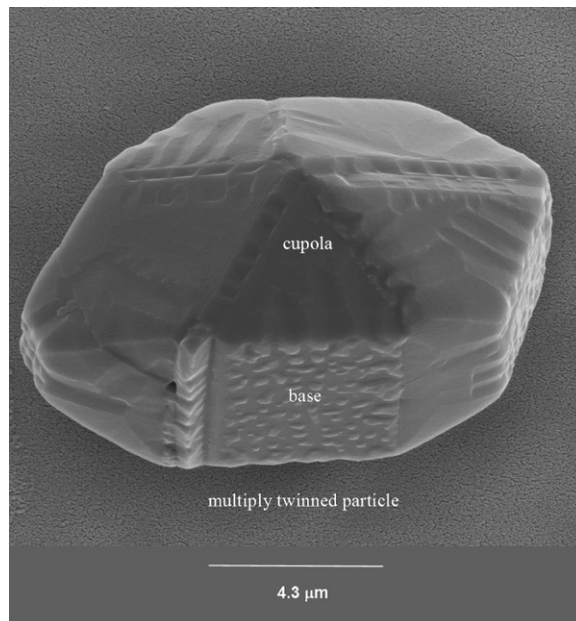


Fig. 3. The typical surface morphology of the C₆₀ crystals with the pronounced surface corrugation.

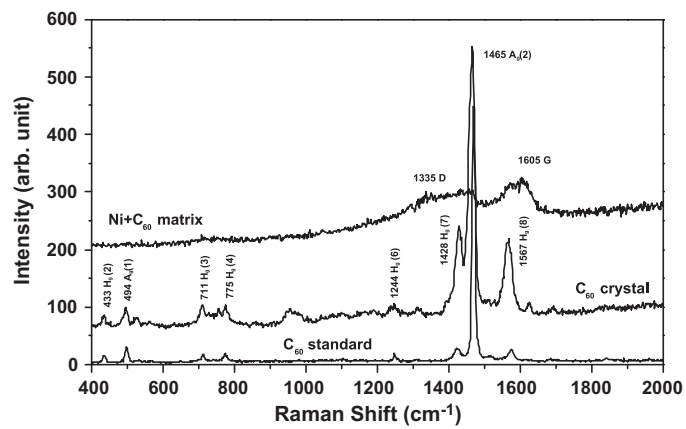


Fig. 4. μ -Raman analysis (514 nm Ar⁺ laser, beam diameter < 5 μ m, power < 1 mW) of the crystal and the neighbor Ni + C₆₀ matrix. For comparison, Raman spectrum from the C₆₀ standard is also shown.